

You Can't Milk a Chicken

#118

R.J. Marks II

♩=120

C

Melody

1)You can't milk a chick - en with -
2)You can't kiss your own el - bow with -
3)You can't hang a sky hook with -
4)Pine - ap - ple up - side down cake up - side
5)You can't make it lon - ger if at
6)You can't floss tween your toes with - out a
7)You can't make pep - pe - ro - ni piz - za
8) _ Two wrongs ne - ver make a right but
9)A sieve will hold no wa - ter but will
10)You can't chew chi - mi - chan - gas with - out
11)You can't chilk a mick - on with

Guitar

Fiddles

Bass

Drums

Melody

The melody staff features a treble clef. The first measure contains a sequence of eighth notes: G4, A4, B4, C5, B4, A4, G4, followed by a quarter rest. The second measure contains a sequence of eighth notes: G4, A4, B4, C5, B4, A4, G4, followed by a quarter note G4.

-out a chick-en milk - er You can't milk a chick - en with -
 -out an el - bow kis - ser. You can't kiss your own el - bow with -
 -out a sky-hook-han-ger. You can't hang a sky-hook with -
 down is right side up. Pine - ap - ple up - side down cake up - side
 first you cut it shor-ter. You can't make it lon - ger if at
 -tween toe flos -ser. You can't floss tween your toes with-out with a
 with-out pep -pe - ro - ni. You can't make pep - pe - ro - ni piz - za
 three lefts al - ways do. You Two wrongs ne - ver make a right but
 hold a - no - ther sieve. A sieve will hold no wa - ter but will
 chi - mi--chan-ga che-wers. You can't chew chi - mi - chan - gas with - out
 out a mick-on chil -ker. You can't chilk a mick - on with -

Guitar

The guitar staff uses a treble clef. The first measure shows a sequence of chords: G major (open), A major (open), B major (open), and C major (open), each held for a quarter note. The second measure shows a sequence of chords: G major (open), A major (open), B major (open), and C major (open), each held for a quarter note.

Fiddles

The fiddles staff uses a treble clef. The first measure contains a sustained chord of G major (open). The second measure contains a sustained chord of G major (open).

Bass

The bass staff uses a bass clef. The first measure contains a sequence of quarter notes: G2, A2, B2, C3. The second measure contains a sequence of quarter notes: G2, A2, B2, C3.

Drums

The drums staff features a drum set icon. The first measure contains a sequence of rhythmic patterns: a quarter note on the snare, followed by eighth notes on the snare and hi-hat, and eighth notes on the snare and hi-hat. The second measure contains a sequence of rhythmic patterns: a quarter note on the snare, followed by eighth notes on the snare and hi-hat, and eighth notes on the snare and hi-hat.

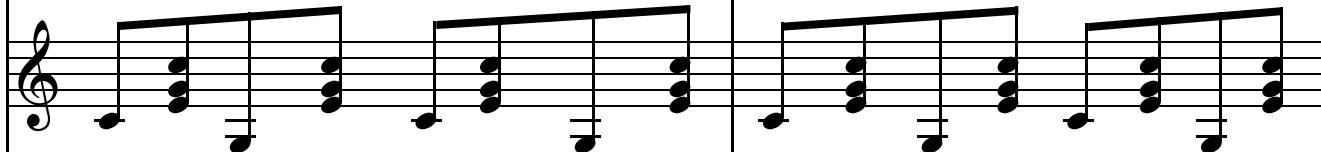
Melody



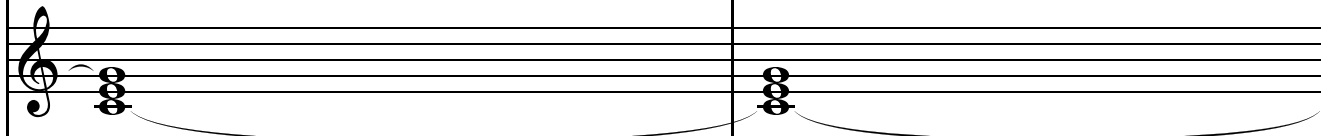
-out a chick - en milk-er.
 out an el - -bow kis-ser.
 out a sky-han-hook han-ger.
 down is right side up.
 first you cut it shor-ter.
 tween toe flos-ser.
 with-out pep - pe - ro - ni.
 three lefts al - ways do.
 hold a - no - ther sieve.
 chi - mi--chan - ga che-wers.
 -out a mick - en chil-ker.

You can't milk a chick - en with-
 You can't kiss your own el - bow with-
 You can't hang a sky-hook with-
 Pine - -ap - ple up - side down cake up-side
 You can't make it lon - ger if at
 You can't floss tween your toes with-out a
 You can't make pep - pe - ro - ni piz - za
 Two wrongs ne - ver make a right but
 A sieve will hold no wa - ter but will
 You can't chew chi - mi - chan - gas with-out
 You can't chick a mick - on with-

Guitar



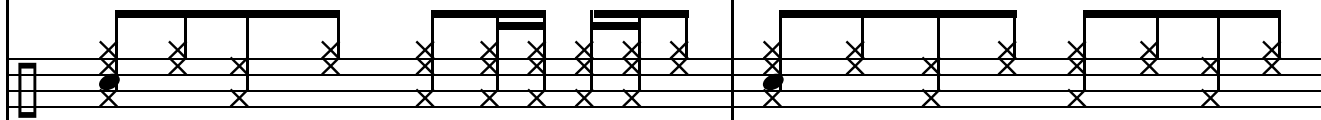
Fiddles



Bass



Drums



Melody

-out a chick-en milk-er and they don't make chick-en milk-ers a-ny
 -out an el-bow kis-ser and they don't 't make el-bow kis-sers a-ny
 -out a sky-hook han-ger and they don't make sky hook han-gers a-ny
 down is right side up but you need-not eat it stan-ding on your
 first you cut it shor-ter and if you cut it twice it's still too
 -tween toe flos-ser and they don't make tween toe flos-sers a-ny
 with-out pep-pe-ro-ni so I hope you like sau-sage and ex-tra
 three lefts al-ways do and four lefts puts you right where you be-
 hold a-no-ther sieve in fact it might hold three or may-be e-ven
 chi-mi-chan-ga che-wers so choose chee-sy chi-mi-chan-gas when you
 -out a mick-on chilk-er and they don't make mick-on chick-ers a-ny

Guitar

Fiddles

Bass

Drums

Melody

Melody staff with treble clef. The first measure contains a quarter note G4, followed by two eighth notes A4 and B4, and a quarter rest. The second measure contains a quarter note C5, followed by a quarter note B4, and a quarter note A4. The third measure contains a quarter note G4, followed by a quarter note F4, and a quarter note E4. The fourth measure contains a quarter note D4, followed by a quarter note C4, and a quarter note B3.

more. You can't move a moun--tain with -
 more. You can't part the Red Sea with -
 more. You can't make wine from wa - ter with -
 head. You can't save a sin - ner with -
 short. You can't know to - tal truth with - out a
 more. You can know peace if you've no peace, the
 cheese. You can't be loved if you're not loved and
 -gan. You can't heal a le - per with -
 four. It's hard to know God with - out prayer and
 chew. You can't fix some-one's eye - ball with -
 more. You can't raise from the dead un - less

Guitar

Guitar staff with treble clef. The first measure contains a quarter note G4, followed by a quarter note A4, and a quarter note B4. The second measure contains a quarter note C5, followed by a quarter note B4, and a quarter note A4. The third measure contains a quarter note G4, followed by a quarter note F4, and a quarter note E4. The fourth measure contains a quarter note D4, followed by a quarter note C4, and a quarter note B3.

Fiddles

Fiddles staff with treble clef. The first measure contains a sustained chord of G4, A4, and B4. The second measure contains a sustained chord of C5, B4, and A4. The third measure contains a sustained chord of G4, F4, and E4. The fourth measure contains a sustained chord of D4, C4, and B3.

Bass

Bass staff with bass clef. The first measure contains a quarter note G3, followed by a quarter note F3, and a quarter note E3. The second measure contains a quarter note D3, followed by a quarter note C3, and a quarter note B2. The third measure contains a quarter note A2, followed by a quarter note G2, and a quarter note F2. The fourth measure contains a quarter note E2, followed by a quarter note D2, and a quarter note C2.

Drums

Drums staff with drum notation. The first measure contains a quarter note bass drum, followed by a quarter note snare drum, and a quarter note hi-hat. The second measure contains a quarter note bass drum, followed by a quarter note snare drum, and a quarter note hi-hat. The third measure contains a quarter note bass drum, followed by a quarter note snare drum, and a quarter note hi-hat. The fourth measure contains a quarter note bass drum, followed by a quarter note snare drum, and a quarter note hi-hat.

G

Melody

Musical notation for the melody line, featuring a treble clef and a series of eighth and quarter notes. A '7' is written below the staff, indicating a barre for guitar. The notation is split into two measures by a vertical bar line.

-out a moun--tain mo - ver. You can't move a moun--tain with -
 -out a Red Sea par - ter. You can't part the Red Sea with -
 -out wine wa - ter ma - kers You can't make wine from wa - ter with -
 -out a sin - ner sa - vior. You can't save a sin - ner with -
 to - -tal truth know-er. You can't know to - tal truth with - out a
 -Prince of Peace be--stows it. You can know peace if you've no peace the
 lo--ving's hard with--out it. You can't be loved if you're not loved and
 -out a le - per hea - ler. You can't heal a le - per with -
 rea-ding His word dai - ly. It's hard to know God with - out prayer and
 out an eye - ball fi - xer. You can't fix some-one's eye - ball with -
 God de - cides to do it. You can't raise from the dead un - less

Guitar

Musical notation for the guitar part, showing a treble clef and a series of chords and single notes. A '7' is written below the staff, indicating a barre. The notation is split into two measures by a vertical bar line.

Fiddles

Musical notation for the fiddles part, showing a treble clef and a series of chords. A horizontal line connects the two measures, indicating a sustained chord.

Bass

Musical notation for the bass part, showing a bass clef and a series of quarter notes. The notation is split into two measures by a vertical bar line.

Drums

Musical notation for the drums part, showing a drum set icon and a series of rhythmic patterns represented by 'x' marks. The notation is split into two measures by a vertical bar line.

C

Melody

Melody staff with treble clef. The first measure contains four chords: C4-E4-G4, C4-E4-G4, C4-E4-G4, and C4-E4-G4. The second measure contains a quarter note G4, a quarter note F4, a quarter note E4, and a quarter rest.

-out a moun--tain mo - ver. You can't move a moun--tain with -
 -out a Red Sea par - ter You can't part the Red Sea with -
 -out wine wa - ter ma - kers You can't make wine from wa - ter with -
 out a sin - ner sa - vior. You can't save a sin - -ner with -
 -to - tal truth know - er. You can't know to - tal truth with - out a
 Prince of Peace be - stows it. You can know peace if you've no peace, the
 lo - ving's hard with - out it. You can't be loved if you're not loved and
 -out a le - -per hea - ler. You can't heal a le - per with -
 rea - ding His word dai - ly. It's hard to know God with - out prayer and
 -out an eye - ball fi - xer. You can't fix an eye - ball with -
 God de - cides to do it. You can't raise from the dead un - less

Guitar

Guitar staff with treble clef. The first measure contains four chords: C4-E4-G4, C4-E4-G4, C4-E4-G4, and C4-E4-G4. The second measure contains four chords: C4-E4-G4, C4-E4-G4, C4-E4-G4, and C4-E4-G4.

Fiddles

Fiddles staff with treble clef. The first measure contains a sustained chord of C4-E4-G4. The second measure contains a sustained chord of C4-E4-G4.

Bass

Bass staff with bass clef. The first measure contains a quarter note C2, a quarter note E2, and a quarter note G2. The second measure contains a quarter note C2, a quarter note E2, and a quarter note G2.

Drums

Drums staff with a drum set icon. The first measure contains a quarter note bass drum, a quarter note snare drum, a quarter note hi-hat, and a quarter note bass drum. The second measure contains a quarter note bass drum, a quarter note snare drum, a quarter note hi-hat, and a quarter note bass drum.

G

G⁶

Melody

Melody staff with treble clef. The first measure contains a series of eighth notes: G4, A4, B4, C5, D5, E5, F5, G5. The second measure contains a series of eighth notes: G5, F5, E5, D5, C5, B4, A4, G4.

-out a moun--tain mo - ver and a mus--tard seed of faith makes moun--tains
 -out a Red Sea par - ter and Mo - ses walked ac - cross it he when he
 -out wine wa - ter ma - kers and Je - sus changed the wa - ter in - to
 -out a sin - -ner sa - vior and Je - sus saves some sin - ners ev - ery
 to - tal truth know - er and the Bi - ble says that Je - sus is the
 Prince of Peace be - stows it and the gua - ran - tees it for e - ter - ni -
 lo - ving's hard with - - out it and God is love and Je - sus is His
 -out a le - per hea - ler and Je - sus healed le - pers with - out
 rea - ding His word dai - ly so pray and read your Bi - ble ev - ery
 -out an eye - ball fi - xer and Je - sus fixed them u - sing spit and
 God de - cides to do it and Je - sus Christ is ri - sen from the

Guitar

Guitar staff with treble clef. The first measure contains a series of eighth notes: G4, A4, B4, C5, D5, E5, F5, G5. The second measure contains a series of eighth notes: G5, F5, E5, D5, C5, B4, A4, G4.

Fiddles

Fiddles staff with treble clef. The first measure contains a series of eighth notes: G4, A4, B4, C5, D5, E5, F5, G5. The second measure contains a series of eighth notes: G5, F5, E5, D5, C5, B4, A4, G4.

Bass

Bass staff with bass clef. The first measure contains a series of eighth notes: G2, A2, B2, C3, D3, E3, F3, G3. The second measure contains a series of eighth notes: G3, F3, E3, D3, C3, B2, A2, G2.

Drums

Drums staff with notes for the first two measures. The first measure contains a series of eighth notes: G4, A4, B4, C5, D5, E5, F5, G5. The second measure contains a series of eighth notes: G5, F5, E5, D5, C5, B4, A4, G4.

C

G

G⁶

Melody

Melody staff showing notes and rests for the first two measures. The first measure is in C major, and the second measure is in G major.

move.
 did.
 wine.
 day.
 truth.
 -ty.
 son.
 drugs.
 day.
 mud.
 dead.

A
 mus--tard seed of faith makes moun--tains
 - Mo - ses walked ac - ross it when he
 - Je - sus changed the wa - ter in - to
 - Je - sus saves some sin - ners ev - ery
 - God said Je - sus Christ is the
 Sal - va - tion's gua - ran - teed e - ter - nal -
 God is love and Je - sus is his
 Je - sus healed le - pers with - out
 Pray and read your Bi - ble ev - ery
 Je - sus fixed them u - sing spit and
 Je - sus Christ is ri - sen from the

Guitar

Guitar staff showing chords and notes for the first two measures.

Fiddles

Fiddles staff showing chords for the first two measures.

Bass

Bass staff showing notes for the first two measures.

Drums

Drums staff showing rhythmic notation for the first two measures.

C

C

Melody

Melody staff with notes and lyrics. The first measure contains notes for 'move.', 'did.', 'wine.', 'day.', 'truth.', '-ly.', 'name.', 'drugs.', 'day.', 'mud.', 'dead.'. The second measure contains notes for '2) You', '3) You', '4) Pine-', '5) You', '6) You', '7) You', '8) _', '9) A', '10) You', '11) You'. The staff continues with three empty measures.

move.
 did.
 wine.
 day.
 truth.
 -ly.
 name.
 drugs.
 day.
 mud.
 dead.

2) You
 3) You
 4) Pine-
 5) You
 6) You
 7) You
 8) _
 9) A
 10) You
 11) You

Guitar

Guitar staff with chords and notes. The first measure contains a complex chordal pattern. The second measure contains a chord with a slur over it. The staff continues with three empty measures.

Fiddles

Fiddles staff with notes. The first measure contains a chord. The second measure contains notes with a slur. The staff continues with three empty measures.

Bass

Bass staff with notes. The first measure contains a sequence of notes. The second measure contains a note with a slur. The staff continues with three empty measures.

Drums

Drums staff with rhythmic notation. The first measure contains a complex drum pattern. The second measure contains a drum pattern with a slur. The staff continues with three empty measures.